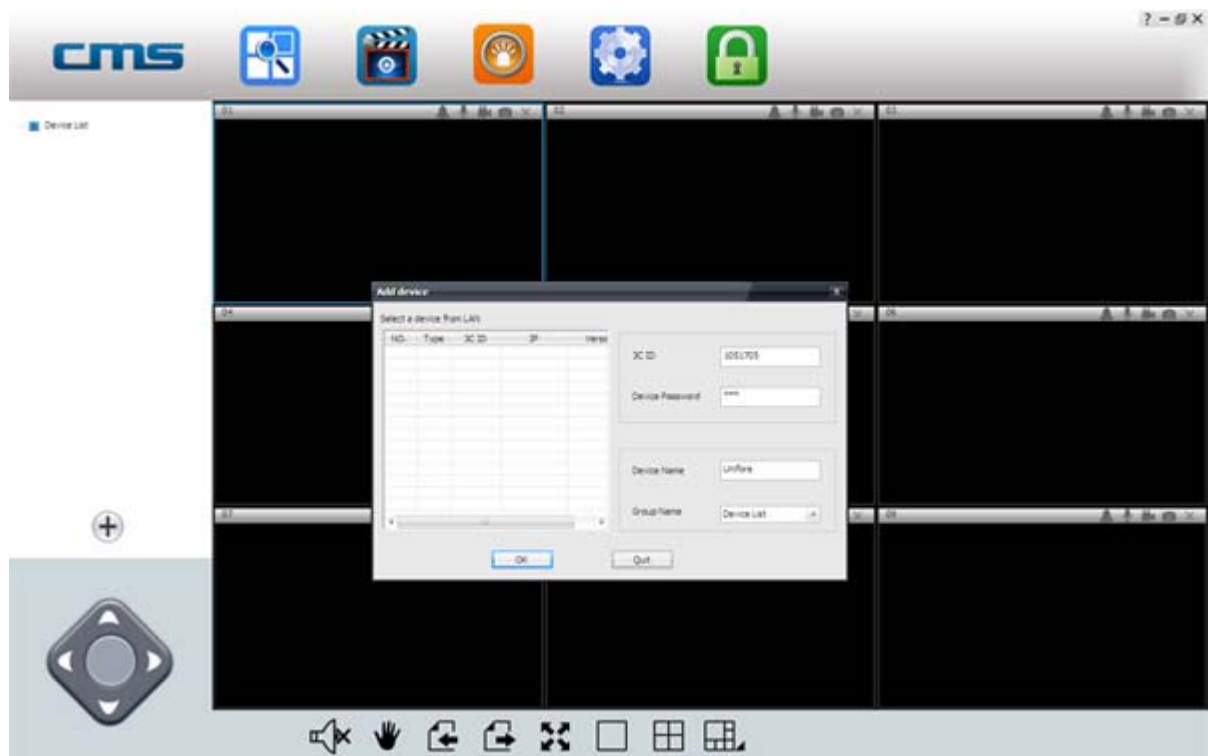


# CMSClient Instructions



## CMS (Windows Software)

Preview: View up to 64 cameras at one time

Playback: Allows you to search for previous recordings

Log: Check what events have occurred on each camera

Config: Configure the CMS Software video storage location and start-up options

Lock: To prevent changes to settings, active recordings and window views, use the lock button. A password is required to unlock

## Setup CMS on Windows:

1. Download link: [http://support.hkvstar.com/file/CMSSetup\\_1.0.0.13\\_34.rar](http://support.hkvstar.com/file/CMSSetup_1.0.0.13_34.rar)
2. Extract RAR rar, click CMSSetup\_1.0.0.13\_34.exe and install
3. Once installation is complete, right click on the CMSClient icon and select 'Properties'
4. In the 'Compatibility' tab, ensure that 'Run this program as an administrator' is ticked, then press 'OK'
5. Double click the CMSClient icon to start the program.

## **CMS Client Login**

### **1. Option A: Local Login**

If you will be using the CMS software on the same network as the IP Camera, follow these steps to log in and view your camera

- a. Select 'Local login' from the login type dropdown box
- b. In the user field, enter: 'admin'
- c. In the password field, enter: '00000000' (8 zeros)
- d. Press 'OK'
- e. If a new camera has been detected, ensure the password matches the camera (by default, the IP Camera password is '123'), then press 'Add All' to add the new device.)

Note: Local login does not support alarm recording. It is recommended to create a COT Pro account and login using 'Remote Login'

### **2. Option B: Remote Login**



Linking CMS with your COT Pro account allows you to log in from a remote location, or separate network. Follow these steps to log in and view your camera

- a. If you do not have a COT Pro account, follow the steps in the COT Pro section to create one
- b. Select 'Remote login' from the login type dropdown box
- c. In the user field, enter your COT Pro email account
- d. In the password field, enter your COT Pro password
- e. Press 'OK'
- f. Cameras added to your COT Pro account can now be viewed

## **Viewing your Camera**

1. On the left side of the 'Preview' page, all of your camera devices will be listed. Right click on your camera and select 'Start Monitoring' from the menu/
2. To expand the viewing window, select the '1 Window' button from the bottom menu. You can also select different viewing layouts using the 'Select Window' button.
3. To change the quality of the feed, right click on your camera feed window and select between 'Smooth', 'Standard Definition' and 'High Definition'.

## Recording Video

1. To commence recording, select the  button at the top right corner of the camera viewing window. The icon will change to a blue colour.
2. To stop recording, press the  button again.

Note: If using more than one camera, right-click on 'Device List' and select 'All Start Recording' and 'All Stop Recording' to control the recording

## Capturing an Image

To capture an image, select the  button at the top right corner of the camera viewing window. The icon will change to a blue colour. A popup will indicate that the image has been saved.

## Playback Menu

To search through and playback recorded footage, follow these steps

1. Select 'Local record file'
2. Select your camera device from the device menu
3. Change the 'begin' and 'end' time to your desired search range, then press 'Search'
4. Your record files will be shown on the left. Double click a file to commence playback

## Log Menu

To check events that have occurred on each camera, follow these steps

1. Select either 'Alarm' or 'Operation' from the log type
2. Select either 'All device' or your specific device from device name
3. Change the 'begin' and 'end' time to your desired search range, then press 'Search'
4. Your logged data is then listed below. To back-up the data as a .txt file, select 'Backup', then save the file to your desired location

## Changing File Save Directory

1. If saving to an external hard drive, insert the drive into your computer and note the directory.
2. Select 'Config' from the main menu.
3. Select 'Browse', and navigate to your desired save location. Press 'OK'.

Note: By default, 1024MB will be reserved on your save location. All other available storage will be used for recorded footage. Maximum record time for each file is 60 minutes

## **Auto Start Settings**

Within the 'Config' menu, change the 'Auto start record when monitoring' and 'Connect all of device automatically' options to 'Open' to activate these features

## **Alarm Trigger Settings**

If connected to your COT Pro app, alarms can also be received by the CMS software

1. Select 'Config' from the main menu
2. Within the 'Alarm trigger' tab, change the 'Pop video' option to your desired time. This is the time that a video will be shown full screen if the alarm is activated
3. Select the buzzer type for your desired sound
4. Press 'Save'

## **Adding a New Camera**

If your camera is not automatically detected by CMS on start-up, follow these steps

1. Ensure your computer has an active network connection
2. On the preview screen, select the '+' button
3. Your camera should be shown on the list. To add, simply highlight your camera and press 'OK'

If your camera is not shown, enter the unique '3C ID' and 'Device Password' found on the outside of your IP Camera. Press 'OK' to add your camera.